



Relationships

2024 Annual Report



Fostering Great Ideas®
Reimagine Foster Care



The more **healthy relationships** a child has, the more likely he will be to recover from trauma and thrive.

Relationships are the agents of change and the most powerful therapy is human love.

— Bruce D. Perry, *The Boy Who Was Raised as a Dog: And Other Stories from a Child Psychiatrist's Notebook*

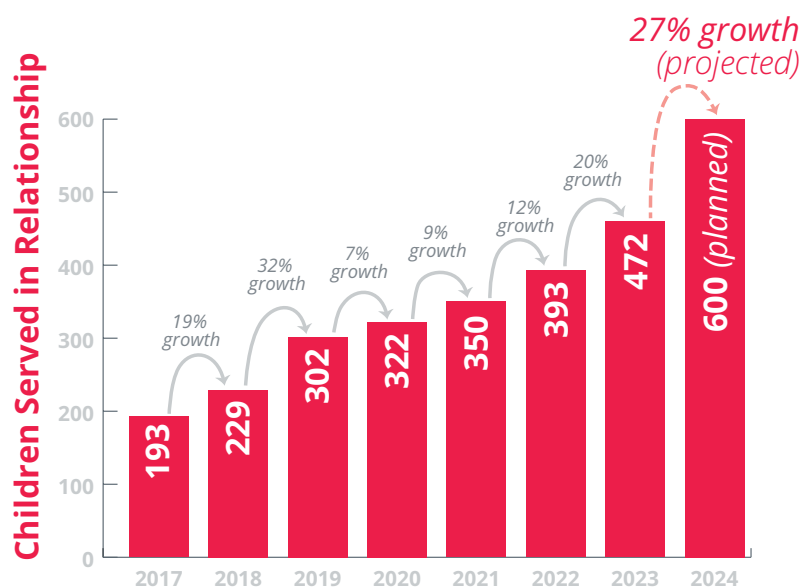
re·la·tion·ship

noun: the way in which two or more concepts, objects, or people are connected, or the state of being connected.

This report is a snapshot of some of the relationships formed through the work of Fostering Great Ideas. Deep connections are growing each day between those in need of assurance and those who provide their ongoing presence on behalf of children in foster care.

When relationships are begun on solid ground and grow in solid, reliable, healthy, and affirming soil, the growth of children and youth unfolds. Their strength, resilience, and belief in their future shows itself in amazing ways.

Our network of relationships is growing, as we expand across the state of South Carolina.



David White
Chief Executive Officer



Kelly Scheib
Board Chair



Dejr Bostick
Board Vice-Chair

What is Fostering Great ideas?

Our Vision

We envision a world where **every child thrives**, empowered with hope, resilience, and a strong sense of belonging.

Our Mission

We **restore dignity** and **increase stability** for children and families impacted by foster care through **innovative solutions** and **meaningful relationships**.

What We Do



We support children

by encouraging them to dream.



We restore families

by guiding them to heal.



We connect communities

by inspiring them to invest.



Fostering Great Ideas to me is...

"I want to thank all of you at Fostering Great Ideas **Tutor Match**® a million times over!! Our foster daughter's tutor is just amazing!!"

~ Foster Mom

"The older I got, the harder foster care got. But [my life coach] understands and sees a way through. It helps me to feel like myself again, not trapped. I feel like a person again."

~ Young Adult in **Aspire**®



"Through mentoring, I gained new perspectives, began to really understand life in foster care, and have received a new member in our family! I have mentored him from age 13 to 24, and continue! In mentoring, you will be blessed beyond measure."

~ **Life Support**® Mentor of 11 years



"Talking about the future is difficult. Having a relationship [with a life coach] has made all the difference."

~ Young Adult in **Aspire**®

Sib-Link® is "something for her to look forward to when things are hard. It allows her to form a connection with her siblings that she otherwise wouldn't have."

~ Foster Parent



"Keeping the connection through **Sib-Link**® is so important. He gets to be with his siblings even after the adoption is finalized."

~ Adoptive Parent



"The support of knowing that I am not alone. The overall encouragement to breathe and know that it's all going to be okay."

~ Mom in **Moms Matter**®

"It didn't just help me get through a really hard part of my life of losing my child, but it continues to help me with life decisions. I have a support team behind me, helping me be the best mom to my family."

~ Mom in **Moms Matter**®

"You've been there for me through everything, when no one else has - every birthday, every event, every holiday. I have known you since I was 12 years old. You've done so much for me and I can't thank you enough. I love you so much."

~ **Life Support**® Mentee, now age 24, who recently asked her mentor to walk her down the aisle.



2024 Relational Programs



Building Encouragement

Moms Matter[®] encourages moms to meet their reunification goals with a trained peer support specialist. Many moms attend the weekly support group for years to come.

Moms Served: 108
(an increase of 60% from previous year)



Cementing Sibling Bonds

Sib-Link[®] provides the assurance of regular visits for siblings who are separated in foster care. Over time, children begin to release anxieties and embrace their siblings, knowing they will always see each other again.

Siblings Served: 131
(an increase of 23% from previous year)



Learning Confidence

Tutor Match[®] tutors provide listening and learning skills so children can catch up with their peers. Weekly sessions not only help children academically, but having a cheerleader gives them confidence to believe in themselves.

Children Served: 90
(an increase of 4% from previous year)

Instilling Assurance

Life Support® mentors are the ones who walk beside youth in foster care. Though their futures feel uncertain, they know their mentor is just a phone call away, ready to listen. Mentors commit to their youth for the entire foster care journey, and many continue through years well beyond.



Youth Served: 123
(an increase of 4% from previous year)

Transforming the Future

Aspire® coaches youth and young adults to envision their future, working with them to secure housing, transportation, income, and education. When they leave foster care, they can thrive in their newfound freedom through connections they continue to make.



Youth & Young Adults Served: 72
(an increase of 39% from previous year)

Speaking Up for Change

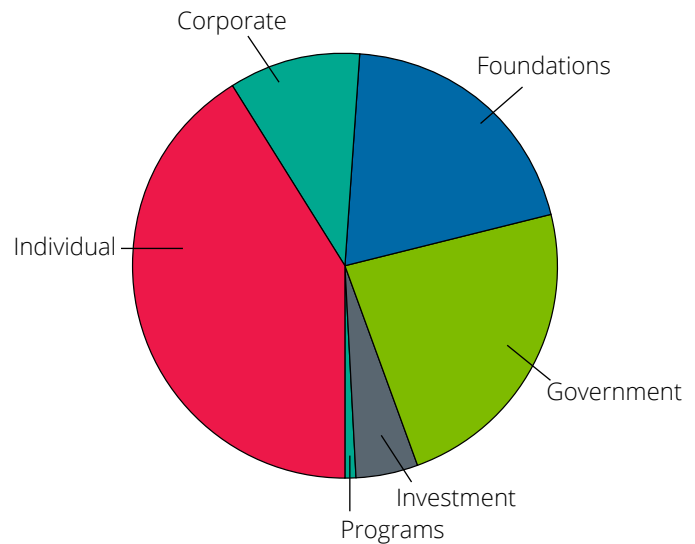
Speak Up® offers advocacy coaching and training to encourage foster youth to tell their story and advocate for change for future generations of fostered youth.



Individuals Served: 52
(an increase of 8% from previous year)

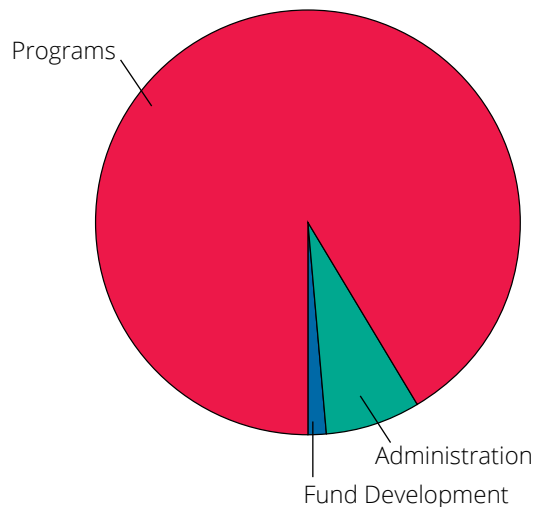
2024 Income Received

Individual:	\$392,711
Corporate:	\$95,941
Foundations:	\$192,000
Government:	\$223,134 *
Investment:	\$45,047
Programs:	\$5,800
Total Income:	\$954,926



2024 Expenses

Programs:	\$768,666 **
Administration:	\$60,372
Fund Development:	\$11,650 ***
Total Expenses:	\$840,688



* This was abnormally high, largely due to non-recurring requests for services.

** We spend much effort building a stronger network of care for children in foster care. Our most expensive programs to run are Aspire, as this requires a life coach on a weekly basis, equating to \$2,500/yr/client and Sib-Link, as this requires significant logistics, meals, and activities for siblings coming from across the state, equating to \$3,300/yr/sibling set.

*** Fund development is low, as we do not employ a fundraiser. Most donors are long-standing.

goal

noun: an aim or desired result;
the destination of a journey.

Where do we go from here?

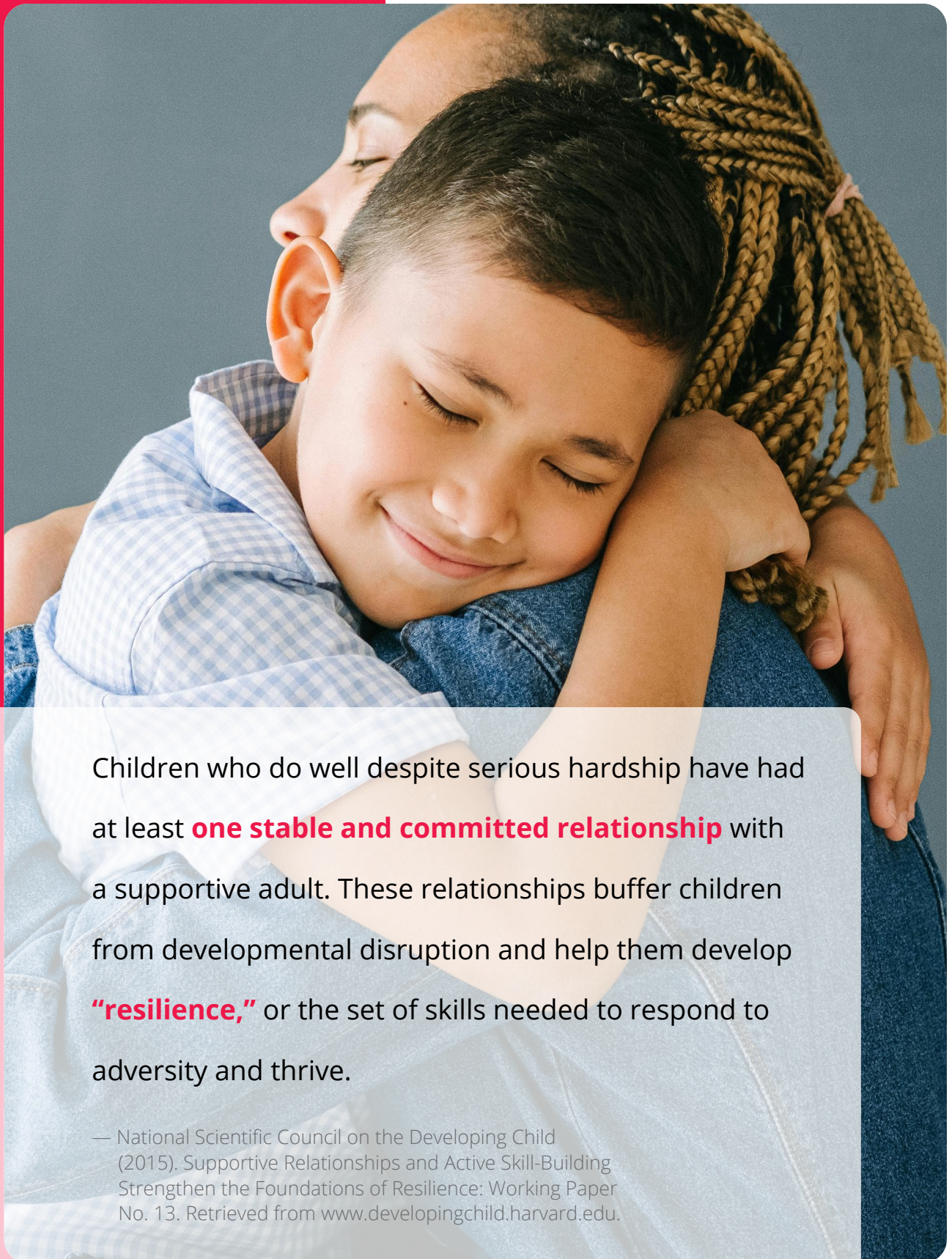
We ended 2024 with significant relational care for **576 children, youth, and young adults**. For our mentored youth, over half are in a multi-year mentor relationship with one of our caring volunteer mentors. For our tutored children, 87% showed more confidence in academics in 2024, with 20% showing a significant increase due to the care of their weekly volunteer tutor. For the young adults who have left care and now have one of our life coaches, 58% are in a stable placement of one or more years. In all these numbers, the relationships have created stable outcomes.

Our goal is to build this number up to 1,000 children, youth and young adults served in 2026 and then to advance the work into a new state, growing the well-established, impactful efforts across state lines. This is a tough task, as each child welfare state system is uniquely different. Yet, they all respond well to innovative care, if they can see how it changes a child's life.

In the short term, we have aggressively grown across South Carolina, moving away from our beginnings as an Upstate, SC entity. In 2024, we hired our first Midlands, SC employee, and will continue to hire into 2025.

In 2025, we will develop a volunteer base in the Midlands, to serve as mentors and tutors, as well as employ additional life coaches to expand **Aspire**® statewide. Our "great ideas" are spreading across South Carolina. We continue our work to restore dignity and increase stability for children and families impacted by foster care, through innovative solutions and meaningful relationships. Thank you for supporting us as we look to this exciting future!





Children who do well despite serious hardship have had at least **one stable and committed relationship** with a supportive adult. These relationships buffer children from developmental disruption and help them develop **“resilience,”** or the set of skills needed to respond to adversity and thrive.

— National Scientific Council on the Developing Child (2015). Supportive Relationships and Active Skill-Building Strengthen the Foundations of Resilience: Working Paper No. 13. Retrieved from www.developingchild.harvard.edu.

Our Board of Directors

Kelly Scheib - Chair

Dejr Bostick - Vice-Chair

Pam Prashad - Treasurer

Amy Karmilovich - Secretary

Lonnie Decker

Jon Lopez

Seldon Peden

Joe Turner

Our Team

David White, LMSW & MBA

Founder & Chief Executive Officer

Latece Logan, MCLC

Chief Culture Officer

ASPIRE

Hope Coudayre, MSW & MCLC

Director of Youth Development &
Senior Executive Life Coach

Chelsey Bayne

Executive Life Coach

Angel Mack, MCLC

Executive Life Coach

Chevy Ritchie

Executive Life Coach

CARE2FOSTER

Trayce Russell

Director of Caregiver Support

LIFE SUPPORT

Courtney Heavener

Program manager

MOMS MATTER

Dena Garzone, CPSS

Director of Family Reunification &
Certified Peer Support Specialist

Marie Blain, CPSS

Peer Support Specialist

SIB-LINK

Julie Eaton

Director of Sibling Care

CerVon Campbell

Area Manager

SPEAK UP

Tori Shuler

Director of Advocacy
Speak Up

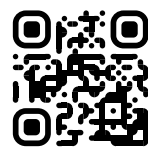
TUTOR MATCH

Kendal Farmer

Volunteer Enrollment Manager
Director of Academic Achievement

Thank you to everyone who supports us on this journey as a donor, volunteer, or partner.

We couldn't do it without you.



Our Mission

We **restore hope** to children in foster care
through **innovative ideas**
built on **meaningful relationships**.



Fostering Great Ideas®
Reimagine Foster Care

fgi4kids.org |       [fgi4kids](#)